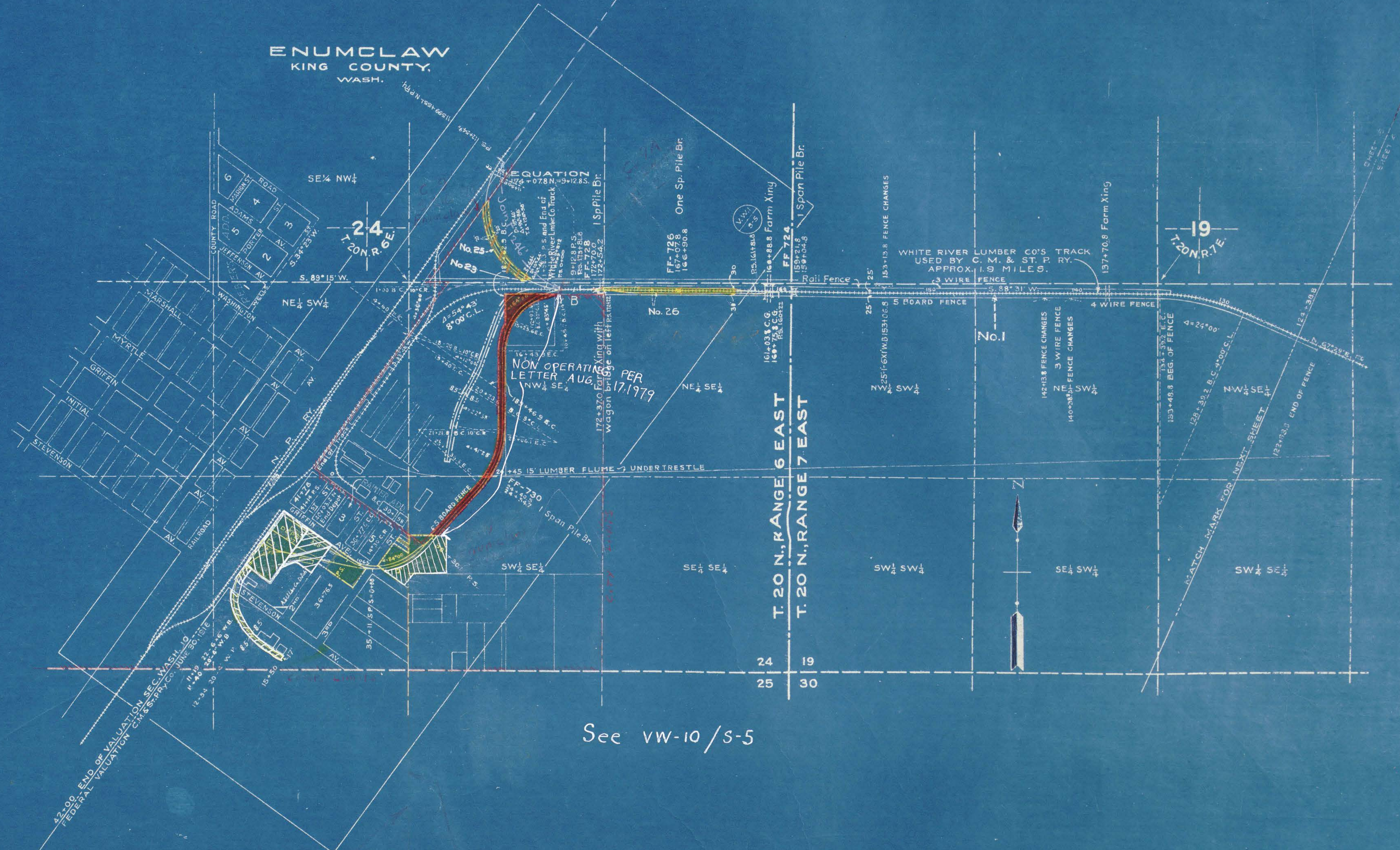


PARCEL NUMBER	GRANTOR	GRANTEE	DATE	RECORD	BOOK	PAGE	REMARKS
1	White River Lumber Co.	CM&STP Ry. Co.	1-1-1906		T-5-3	Trackage P.L.C. under O.R.P.	White River
25	Marit Sanders	C.M. ST. P. & P.P. Ry. Co. & N.P.R. Co.	7-26-39	1550-345	July 29-1939	6586	A.P.C. 56294

ENUMCLAW  
KING COUNTY,  
WASH.



See VW-10/S-5

Sheet No. 5 of 5 sheets of C. M. & St. P. Ry. Co. Main Line  
from survey station 124+38.8 to survey station 42+00

*A.E. Lodge*  
Valuation Engineer

RIGHT OF WAY AND TRACK MAP  
CHICAGO, MILWAUKEE & ST. PAUL RY. CO.

OPERATED BY THE  
CHICAGO, MILWAUKEE & ST. PAUL RY. CO.  
COAST DIVISION  
STATION 124+38.8 TO STATION 42+00  
SCALE: 1 IN. = 4 MILES  
JUNE 30, 1918  
OFFICE OF VALUATION ENGINEER  
CHICAGO, ILLINOIS



KING